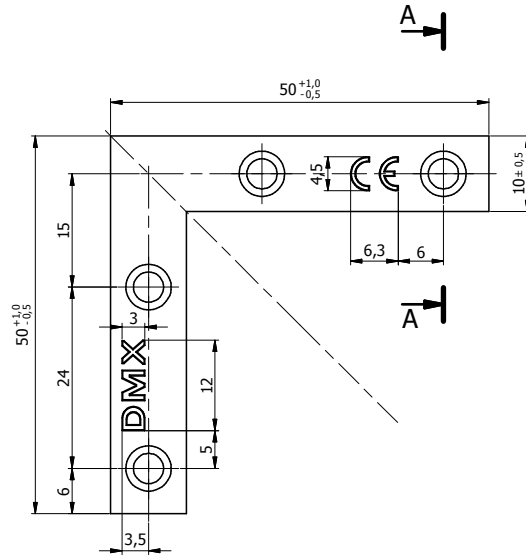
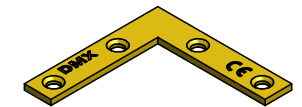
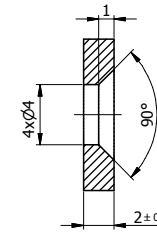


This document is the absolute property of DOMAX Sp. z o.o. This document must not be copied without the written permission of DOMAX Sp. z o.o. The contents thereof must not be disclosed to a third party nor be used for any unauthorized purpose. Contravention will be prosecuted.

| Rev. | Explanation | Date | Revised by | Approved by |
|------|-------------|------|------------|-------------|
| | | | | |
| | | | | |



A-A (2 : 1)



Note:

1. General tolerances EN 22768 mK.
2. Corrosion protection Fe/Zn 12 acc. PN-EN ISO 2081.
3. Carry the marks to 0,1 [mm] depth.
4. It is permissible to perform without the marks or with the marks according to the previous pattern.

| | | | | | | |
|------------------|----------------|------------|---------------|--------------|----------------------------|------------|
| 1 | Plate | 1 | x2-50x50 | DC01 | 21,8 | 13,1 |
| Item | Identification | Amt. | Specification | Raw material | Surface [cm ²] | Weight [g] |
| Design | K. Rytlewski | Checked | | Approved | Scale | 1:1 |
| Drawn | K. Rytlewski | | | | | Sheet |
| Index | 4655 | Date | 13.09.2017 | | | 1/1 |
| | | Angle NA 5 | | | | Rev. |
| DOMAX Sp. z o.o. | | NA 5 | | | | |